

NEW JERSEY DEPARTMENT OF CORRECTIONS

Marcus O. Hicks, Esq.
Acting Commissioner



OFFENDER CHARACTERISTICS REPORT

ON JANUARY 2, 2019

Office of Policy and Planning
January 2019

INTRODUCTION

This report has been developed to provide information regarding offender characteristics in each correctional complex, major institution, and satellite housing-unit under the jurisdiction of the New Jersey Department of Corrections on January 2, 2019. The selected characteristics compiled in this report are Base Offense at Admission, Total Term at Admission, Ethnicity, Age, County of Commitment, and Mandatory Minimum Term.

The Prison Complex includes: New Jersey State Prison, Central Reception and Assignment Facility, East Jersey State Prison, Bayside State Prison, Mid-State Correctional Facility, Southern State Correctional Facility, Northern State Prison, South Woods State Prison, Edna Mahan Correctional Facility for Women and the Adult Diagnostic and Treatment Center (ADTC), a facility for adult male sex offenders.

NOTE: In the data tables, separate subtotals are provided for ADTC and Edna Mahan Correctional Facility for Women due to the interest in these unique populations. The remainder of the Prison Complex is labeled "Male Offenders in Other Facilities."

The Youth Correctional Complex consists of Garden State Youth Correctional Facility, Albert C. Wagner Youth Correctional Facility and Mountainview Youth Correctional Facility.

"Halfway Houses, County Jails, Reentry, St. Francis" include state-sentenced inmates housed in halfway houses, county jails, Reentry, and Central Medical Unit (St. Francis Hospital).

"Not Coded" are records for offenders in the correctional system for whom admission characteristics data had not been entered into the computerized information system as of January 2, 2019.

HIGHLIGHTS

- *Sixty-three percent (63%) of all New Jersey Department of Corrections inmates were committed for crimes against persons which include Homicide, Sexual Assault, Aggravated/Simple Assault, Robbery, Kidnapping, Other Sex Offenses and Other Person Offenses.*
- *Thirteen percent (13%) of all Department of Corrections inmates have been committed for narcotics law violations, including possession, sale and distribution. Eighty-four percent (84.2%) of all narcotics law violations are sale/distribution offenses.*
- *The median total term for Department of Corrections' inmates is 6 years.*
- *Thirty-nine percent (39%) of all New Jersey Department of Corrections inmates were committed with total terms of 10 years or more. Of the total, six percent (6%) are serving Life Sentences with parole eligibility, and 86 offenders are serving Life Sentences without parole.*
- *Seventy-six percent (76.3%) of New Jersey Department of Corrections inmates housed in the State System have sentences that include mandatory minimum terms.*
- *Thirty-four percent (34%) of all inmates in the New Jersey Department of Corrections are 30 years of age or younger. The median age for inmates in all facilities is 35.*
- *Sixty-two percent (62%) of New Jersey Department of Corrections' inmates are Black, 21% White, 16% Hispanic, and 1% Asian.*
- *Of the 21 New Jersey counties, ten (Atlantic, Bergen, Camden, Essex, Hudson, Mercer, Middlesex, Monmouth, Passaic and Union) account for 79% of Total Department of Corrections inmates. Essex County is the highest contributor with 15%.*

NOTES

DUE TO SOFTWARE AND ROUNDING:

- **WORKSHEET ROW AND COLUMN TOTALS DO NOT ALWAYS EQUAL 100 PERCENT.**
- **PIE CHART PERCENTAGES DO NOT ALWAYS EQUAL 100%.**
- **PIE CHART PERCENTAGES MAY DIFFER SLIGHTLY FROM WORKSHEET PERCENTAGES.**
- **ACCOMPANYING NARRATIVES REFLECT PIE CHART PERCENTAGES.**

TOTAL INMATES IN NEW JERSEY STATE CORRECTIONAL INSTITUTIONS AND SATELLITE UNITS

TOTAL INMATES		19,212
PRISON COMPLEX	13,897	YOUTH COMPLEX
ADTC	469	GARDEN STATE TOTAL
Bayside – Main	994	MOUNTAINVIEW TOTAL
Bayside – Farm	438	Wagner – Main
BAYSIDE TOTAL	1,432	Wagner – Ad Seg
CRAF – Jones Farm	98	Wagner – Minimum Units
CRAF – Reception	467	WAGNER TOTAL
CRAF TOTAL	565	HALFWAY HOUSES, COUNTY
East Jersey Main	1,179	JAILS, REENTRY, ST. FRANCIS
East Jersey Camp	48	Halfway Houses
EAST JERSEY TOTAL	1,227	County Jails
EDNA MAHAN TOTAL	609	Central Medical Unit (St. Francis)
MIDSTATE TOTAL	629	Reentry
NJ STATE PRISON TOTAL	1,521	
Northern State – Main	1,956	
Northern State – Ad Seg Male	465	
NORTHERN STATE TOTAL	2,421	
SOUTHERN STATE TOTAL	1,693	
SOUTH WOODS TOTAL	3,331	

TABLE OF CONTENTS

<u>REPORT NAME</u>	<u>PAGE</u>
<i>OFFENDERS IN NEW JERSEY CORRECTIONAL INSTITUTIONS BY BASE OFFENSE</i>	7
<i>Prison Complex Offenders</i>	8-11
<i>Youth Complex Offenders</i>	12
<i>Offenders in Halfway Houses, County Jails and St. Francis Hospital</i>	13
<i>OFFENDERS IN NEW JERSEY CORRECTIONAL INSTITUTIONS BY TOTAL TERM AT ADMISSION</i>	14
<i>Prison Complex Offenders</i>	15-18
<i>Youth Complex Offenders</i>	19
<i>Offenders in Halfway Houses, County Jails and St. Francis Hospital</i>	20
<i>OFFENDERS IN NEW JERSEY CORRECTIONAL INSTITUTIONS BY MANDATORY MINIMUM TERM</i>	21
<i>Prison Complex Offenders</i>	22-25
<i>Youth Complex Offenders</i>	26
<i>Offenders in Halfway Houses, County Jails and St. Francis Hospital</i>	27
<i>OFFENDERS IN NEW JERSEY CORRECTIONAL INSTITUTIONS BY AGE</i>	28
<i>Prison Complex Offenders</i>	29-32
<i>Youth Complex Offenders</i>	33
<i>Offenders in Halfway Houses, County Jails and St. Francis Hospital</i>	34
<i>OFFENDERS IN NEW JERSEY CORRECTIONAL INSTITUTIONS BY ETHNIC IDENTIFICATION</i>	35
<i>Prison Complex Offenders</i>	36-39
<i>Youth Complex Offenders</i>	40
<i>Offenders in Halfway Houses, County Jails and St. Francis Hospital</i>	41
<i>OFFENDERS IN NEW JERSEY CORRECTIONAL INSTITUTIONS BY COUNTY OF COMMITMENT</i>	42
<i>Prison Complex Offenders</i>	43-46
<i>Youth Complex Offenders</i>	47
<i>Offenders in Halfway Houses, County Jails and St. Francis Hospital</i>	48

BASE OFFENSE

**OFFENDERS IN NEW JERSEY CORRECTIONAL INSTITUTIONS
ON JANUARY 2, 2019, BY BASE OFFENSE**

In these tabulations, the base offense is the most serious offense at the time of admission. These figures reflect base or controlling offenses at admission only and do not include any offenses in addition to the base offense in the case of multiple sentences at admission. Additional sentences imposed following initial admission to the state correctional system are not included in these data.

- Violent offenses include homicide, sexual assault, aggravated and simple assault, robbery, kidnapping, other sex offenses and other person offenses (i.e. terroristic threats, coercion, larceny from a person, death by auto and negligent manslaughter). Violent offenses grouped as "Other Sex" include: Criminal Sexual Attempt, Child Pornography, Endangering the Welfare of a Child, Prostitution, and Registration Sex Offender.
- Property offenses include burglary, arson, theft, forgery, embezzlement, and receiving / possessing stolen property.
- Public policy offenses include racketeering, gambling, corruption, perjury, escape, bail jumping, juvenile and family related offenses, and conspiracy.
- Weapons offenses include weapon possession and operation.
- Drug violations include distribution, manufacture, possession, and use of drugs. Virtually all drug offenses are for sale and distribution rather than for mere possession.

OFFENDERS IN CORRECTIONAL INSTITUTIONS BY BASE OFFENSE

Base Offense	Total		Male Offenders in Other Facilities		Youth Complex		ADTC		Edna Mahan		*Halfway Houses, County Jails, Reentry, St. Francis	
	#	%	#	%	#	%	#	%	#	%	#	%
TOTAL OFFENDERS	19,212	100%	12,819	100%	2,478	100%	469	100%	609	100%	2,837	100%
Violent Offenses	12,060	63%	8,810	69%	1,539	62%	469	100%	386	63%	856	30%
Property Offenses	1,275	7%	848	7%	139	6%	0	0%	56	9%	232	8%
Public Policy	561	3%	358	3%	68	3%	0	0%	20	3%	115	4%
Weapons	2,697	14%	1325	10%	570	23%	0	0%	37	6%	765	27%
Drugs	2,492	13%	1,462	11%	162	7%	0	0%	79	13%	789	28%
Not Coded	127	1%	16	0%	0	0%	0	0%	31	5%	80	3%

- Inmates with violent offenses comprise 69% of Male Offenders in Other Facilities, 62% of the Youth Complex, 100% of ADTC, 63% of Edna Mahan, and 30% of Halfway Houses, County Jails, Reentry, and St. Francis.
- * Halfway Houses, Reentry, County Jails, and Central Medical Unit (Saint Francis Hospital).

Prison Complex Offenders By Base Offense

Institution	Total	Violent Offenses	Homicide	Sexual Assault	Assault	Robbery	Kidnap	Other Sex	Other Person	Property	Public Policy	Weapons	Drugs	Not Coded
Bayside Main	994 100%	580 58%	149 15%	42 4%	102 10%	246 25%	7 1%	30 3%	4 0%	75 8%	38 4%	162 16%	139 14%	0 0%
Bayside Farm	438 100%	190 43%	40 9%	0 0%	50 11%	93 21%	2 0%	5 1%	0 0%	68 16%	20 5%	63 14%	97 22%	0 0%
Bayside Total	1,432 100%	770 54%	189 13%	42 3%	152 11%	339 24%	9 1%	35 2%	4 0%	143 10%	58 4%	225 16%	236 16%	0 0%
CRAF Jones Farm	98 100%	11 11%	0 0%	0 0%	5 5%	6 6%	0 0%	0 0%	0 0%	44 45%	7 7%	0 0%	36 37%	0 0%
CRAF Reception	467 100%	246 53%	18 4%	54 12%	50 11%	62 13%	0 0%	58 12%	4 1%	51 11%	22 5%	63 13%	81 17%	4 1%
CRAF Total	565 100%	257 45%	18 3%	54 10%	55 10%	68 12%	0 0%	58 10%	4 1%	95 17%	29 5%	63 11%	117 21%	4 1%
East Jersey Main	1,179 100%	1,107 94%	693 59%	101 9%	44 4%	211 18%	48 4%	8 1%	2 0%	10 1%	8 1%	17 1%	37 3%	0 0%
East Jersey Camp	48 100%	24 50%	0 0%	0 0%	9 19%	14 29%	1 2%	0 0%	0 0%	5 10%	4 8%	5 10%	10 21%	0 0%
East Jersey Total	1,227 100%	1,131 92%	693 56%	101 8%	53 4%	225 18%	49 4%	8 1%	2 0%	15 1%	12 1%	22 2%	47 4%	0 0%

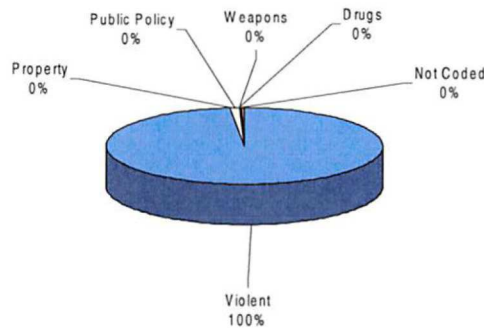
Prison Complex Offenders By Base Offense

Institution	Total	Violent Offenses	Homicide	Sexual Assault	Assault	Robbery	Kidnap	Other Sex	Other Person	Property	Public Policy	Weapons	Drugs	Not Coded
Midstate	629 100%	319 51%	63 10%	15 2%	75 12%	152 24%	2 0%	11 2%	1 0%	59 9%	18 3%	115 18%	118 19%	0 0%
NJ State Prison	1,521 100%	1,366 90%	984 65%	82 5%	52 3%	197 13%	36 2%	11 1%	4 0%	30 2%	19 1%	37 2%	62 4%	7 0%
Northern Main	1,956 100%	1,456 74%	540 28%	115 6%	191 10%	519 27%	47 2%	37 2%	7 0%	92 5%	52 3%	179 9%	176 9%	1 0%
Northern Ad. Seg. Male	465 100%	281 60%	49 11%	20 4%	54 12%	140 30%	4 1%	11 2%	3 1%	45 10%	11 2%	72 15%	56 12%	0 0%
Northern Total	2,421 100%	1,737 72%	589 24%	135 6%	245 10%	659 27%	51 2%	48 2%	10 0%	137 6%	63 3%	251 10%	232 10%	1 0%
Southern	1,693 100%	742 44%	70 4%	144 9%	176 10%	212 13%	11 1%	117 7%	12 1%	209 12%	74 4%	306 18%	361 21%	1 0%
South Woods	3,331 100%	2,488 75%	765 23%	413 12%	319 10%	720 22%	68 2%	189 6%	14 0%	160 5%	85 3%	306 9%	289 9%	3 0%
Subtotal Male Offenders in Other Facilities	12,819 100%	8,810 69%	3,371 26%	986 8%	1,127 9%	2,572 20%	226 2%	477 4%	51 0%	848 7%	358 3%	1325 10%	1,462 11%	16 0%

Prison Complex Offenders By Base Offense

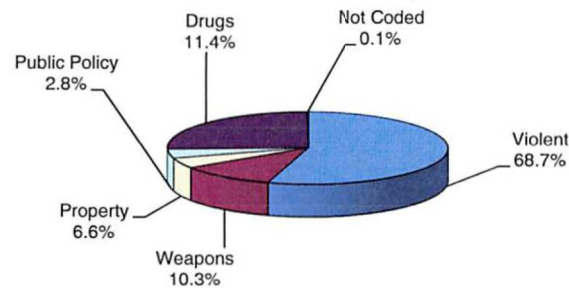
Institution	Total	Violent Offenses	Homicide	Sexual Assault	Assault	Robbery	Kidnap	Other Sex	Other Person	Property	Public Policy	Weapons	Drugs	Not Coded
ADTC	469	469	3	393	0	3	9	59	2	0	0	0	0	0
	100%	100%	1%	84%	0%	1%	2%	13%	0%	0%	0%	0%	0%	0%
Subtotal	13,288	9,279	3,374	1,379	1,127	2,575	235	536	53	848	358	1325	1,462	16
	100%	70%	25%	10%	8%	19%	2%	4%	0%	6%	3%	10%	11%	0%
Mahan - Female Prison	609	386	182	15	57	101	11	18	2	56	20	37	79	31
	100%	63%	30%	2%	9%	17%	2%	3%	0%	9%	3%	6%	13%	5%
Total Prison Complex	13,897	9,665	3,556	1,394	1,184	2,676	246	554	55	904	378	1362	1,541	47
	100%	70%	26%	10%	9%	19%	2%	4%	0%	7%	3%	10%	11%	0%

ADTC



Virtually all offenders at ADTC were committed for violent offenses.

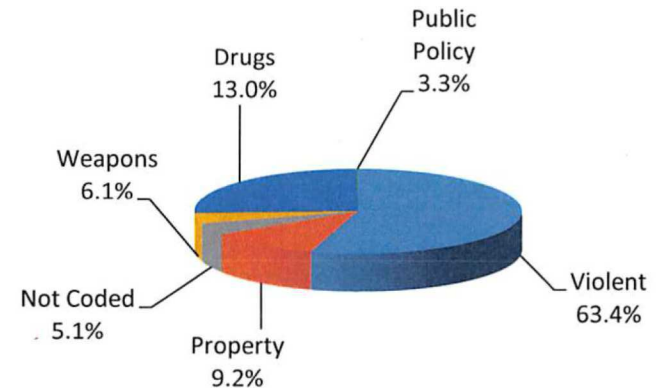
MALE OFFENDERS IN OTHER FACILITIES



Sixty-eight percent (68.7%) of Male Offenders in Other Facilities were convicted of a violent offense.

Eleven percent (11.4%) of all Male Offenders in Other Facilities were convicted of drug offenses.

FEMALE OFFENDERS



Violent offenses were the most frequent commitment-offenses at Edna Mahan (63.4%).

Thirteen percent (13.0%) of female inmates were committed for drug offenses.

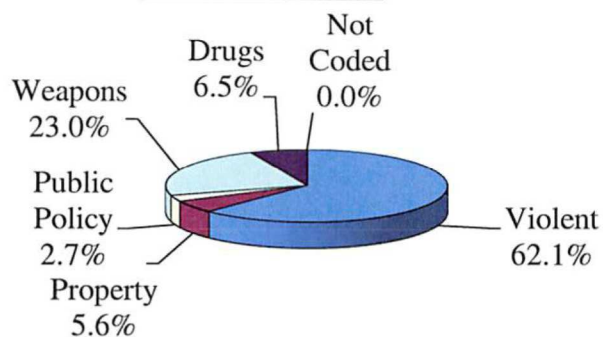
Youth Complex Offenders By Base Offense

Institution	Total	Violent Offenses	Homicide	Sexual Assault	Assault	Robbery	Kidnap	Other Sex	Other Person	Property	Public Policy	Weapons	Drugs	Not Coded
Garden State	1,219 100%	816 67%	161 13%	45 4%	174 14%	408 33%	6 0%	19 2%	3 0%	56 5%	30 2%	259 21%	58 5%	0 0%
Mountainview	627 100%	286 46%	18 3%	13 2%	84 13%	147 23%	2 0%	18 3%	4 1%	49 8%	19 3%	201 32%	72 11%	0 0%
Wagner Main	298 100%	216 72%	36 12%	14 5%	37 12%	116 39%	4 1%	7 2%	2 1%	7 2%	8 3%	57 19%	10 3%	0 0%
Wagner Ad. Seg.	263 100%	178 68%	22 8%	4 2%	36 14%	110 42%	1 0%	5 2%	0 0%	20 8%	9 3%	42 16%	14 5%	0 0%
Wagner Minimum Units	71 100%	43 61%	11 15%	0 0%	12 17%	18 25%	1 1%	0 0%	1 1%	7 10%	2 3%	11 15%	8 11%	0 0%
Wagner Total	632 100%	437 69%	69 11%	18 3%	85 13%	244 39%	6 1%	12 2%	3 0%	34 5%	19 3%	110 17%	32 5%	0 0%
Total Youth Complex	2,478 100%	1,539 62%	248 10%	76 3%	343 14%	799 32%	14 1%	49 2%	10 0%	139 6%	68 3%	570 23%	162 7%	0 0%

Offenders In Halfway Houses, County Jails, Reentry, and St. Francis By Base Offense

Institution	Total	Violent Offenses	Homicide	Sexual Assault	Assault	Robbery	Kidnap	Other Sex	Other Person	Property	Public Policy	Weapons	Drugs	Not Coded
Central Medical Unit	5 100%	4 80%	3 60%	1 20%	0 0%	0 0%	0 0%	0 0%	0 0%	0 0%	1 20%	0 0%	0 0%	0 0%
County Jail	92 100%	6 7%	0 0%	2 2%	0 0%	2 2%	0 0%	2 2%	0 0%	1 1%	1 1%	2 2%	6 7%	76 83%
Reentry	117 100%	69 59%	18 15%	0 0%	11 9%	39 33%	1 1%	0 0%	0 0%	8 7%	7 6%	30 26%	3 3%	0 0%
Halfway House	2,623 100%	777 30%	145 6%	0 0%	207 8%	413 16%	3 0%	0 0%	9 0%	223 9%	106 4%	733 28%	780 30%	4 0%
Total Halfway Houses, County Jails, Reentry, St. Francis	2,837 100%	856 30%	166 6%	3 0%	218 8%	454 16%	4 0%	2 0%	9 0%	232 8%	115 4%	765 27%	789 28%	80 3%

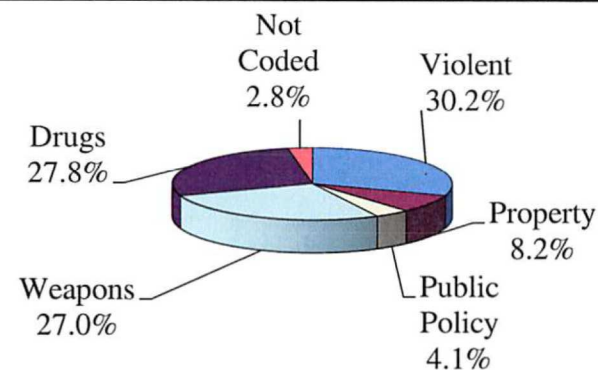
YOUTH COMPLEX



Sixty-two percent (62.1%) of offenders housed in the youth complex were incarcerated for violent offenses.

Six percent (6.5%) of offenders housed in the youth complex were incarcerated for drug offenses and 5.6% for property offenses.

HALWAY HOUSES, COUNTY JAILS, REENTRY, ST. FRANCIS



Offenders housed in county jails, halfway houses, Reentry, and St. Francis are less serious offenders than the Male Offenders in Other Facilities (i.e. 30.2% violent offenders vs. 68.7% Male Offenders in Other Facilities with violent offenses).

Twenty-seven percent (27.8%) of offenders housed in Halfway Houses, County Jails, Reentry, and St. Francis were committed for drug offenses.

TOTAL MAXIMUM TERM AT ADMISSION

**OFFENDERS IN NEW JERSEY CORRECTIONAL INSTITUTIONS
ON JANUARY 2, 2019, BY TOTAL TERM AT ADMISSION**

Total term at admission is the total maximum term imposed for each offender at the time of commitment from the community or from parole. This includes the aggregate term for those admitted with multiple sentences. Additional sentences received following initial admission are not reflected or included in the data.

OFFENDERS IN NEW JERSEY CORRECTIONAL INSTITUTIONS BY TOTAL TERM AT ADMISSION

Total Term	Total		Male Offenders in Other Facilities		Youth Complex		ADTC		Edna Mahan		Halfway Houses, County Jails, Reentry, St. Francis	
	#	%	#	%	#	%	#	%	#	%	#	%
TOTAL OFFENDERS	19,212	100%	12,819	100%	2,478	100%	469	100%	609	100%	2,837	100%
1-2 Years	893	5%	700	5%	90	4%	3	1%	31	5%	69	2%
3 Years	2,006	10%	1,147	9%	355	14%	12	3%	114	19%	378	13%
4 Years	1,476	8%	819	6%	250	10%	22	5%	42	7%	343	12%
5 Years	3,701	19%	1,930	15%	733	30%	50	11%	112	18%	876	31%
6 Years	909	5%	503	4%	147	6%	30	6%	20	3%	209	7%
7 Years	1,152	6%	666	5%	224	9%	42	9%	30	5%	190	7%
8-9 Years	1,221	6%	733	6%	185	7%	58	12%	36	6%	209	7%
10 Years	1,199	6%	767	6%	169	7%	58	12%	29	5%	176	6%
11-14 Years	1,110	6%	762	6%	130	5%	53	11%	36	6%	129	5%
15 Years	576	3%	413	3%	54	2%	38	8%	16	3%	55	2%
16-20 Years	1,177	6%	950	7%	71	3%	52	11%	37	6%	67	2%
21+ Years	2,304	12%	2,089	16%	43	2%	48	10%	71	12%	53	2%
Life With Parole	1,083	6%	1,055	8%	0	0%	3	1%	22	4%	3	0%
Life Without Parole	86	0%	86	1%	0	0%	0	0%	0	0%	0	0%
Not Coded	319	2%	199	2%	27	1%	0	0%	13	2%	80	3%

Among New Jersey Adult Correctional Offenders:

- The median term for adult offenders is 6 years.
- Forty-two percent (42%) are serving terms of 1-5 years.
- Seventeen percent (17%) are serving terms of 6-9 years.
- Thirty-nine percent (39%) are serving terms of 10 years or more, which includes 1,083 offenders serving life and 86 serving life without parole sentences.
- Two percent (2%) were not coded.

Prison Complex Offenders By Total Term At Admission

Institution	Total	1-2 Years	3 Years	4 Years	5 Years	6 Years	7 Years	8-9 Years	10 Years	11-14 Years	15 Years	16-20 Years	20+ Years	Life With Parole	Life Without Parole	Not Coded
Bayside Main	994 100%	45 5%	103 10%	81 8%	223 22%	49 5%	72 7%	94 9%	84 8%	77 8%	27 3%	59 6%	53 5%	17 2%	0 0%	10 1%
Bayside Farm	438 100%	42 10%	59 13%	47 11%	80 18%	17 4%	17 4%	29 7%	31 7%	33 8%	15 3%	29 7%	18 4%	0 0%	0 0%	21 5%
Bayside Total	1,432 100%	87 6%	162 11%	128 9%	303 21%	66 5%	89 6%	123 9%	115 8%	110 8%	42 3%	88 6%	71 5%	17 1%	0 0%	31 2%
CRAF Jones Farm	98 100%	12 12%	38 39%	24 24%	12 12%	2 2%	2 2%	1 1%	1 1%	0 0%	0 0%	0 0%	0 0%	0 0%	0 0%	6 6%
CRAF Reception	467 100%	135 29%	64 14%	45 10%	85 18%	24 5%	22 5%	17 4%	7 1%	7 1%	4 1%	6 1%	5 1%	1 0%	0 0%	45 10%
CRAF Total	565 100%	147 26%	102 18%	69 12%	97 17%	26 5%	24 4%	18 3%	8 1%	7 1%	4 1%	6 1%	5 1%	1 0%	0 0%	51 9%
East Jersey Main	1,179 100%	2 0%	7 1%	5 0%	10 1%	5 0%	9 1%	14 1%	24 2%	58 5%	61 5%	160 14%	603 51%	218 18%	3 0%	0 0%
East Jersey Camp	48 100%	0 0%	8 17%	3 6%	3 6%	2 4%	3 6%	3 6%	5 10%	9 19%	3 6%	4 8%	5 10%	0 0%	0 0%	0 0%
East Jersey Total	1,227 100%	2 0%	15 1%	8 1%	13 1%	7 1%	12 1%	17 1%	29 2%	67 5%	64 5%	164 13%	608 50%	218 18%	3 0%	0 0%

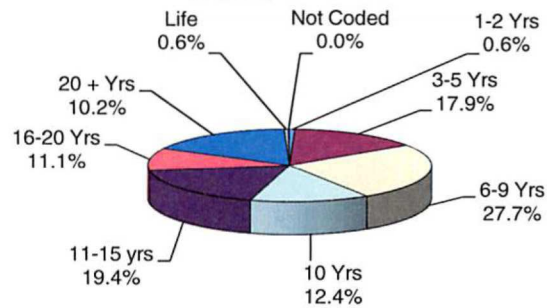
Prison Complex Offenders By Total Term At Admission

Institution	Total	1-2 Years	3 Years	4 Years	5 Years	6 Years	7 Years	8-9 Years	10 Years	11-14 Years	15 Years	16-20 Years	20+ Years	Life With Parole	Life Without Parole	Not Coded
Midstate	629 100%	23 4%	82 13%	45 7%	135 21%	44 7%	54 9%	68 11%	54 9%	35 6%	21 3%	32 5%	23 4%	7 1%	0 0%	6 1%
NJ State Prison	1,521 100%	14 1%	38 2%	25 2%	66 4%	18 1%	18 1%	17 1%	28 2%	31 2%	20 1%	44 3%	620 41%	485 32%	82 5%	15 1%
Northern Main	1,956 100%	81 4%	151 8%	118 6%	259 13%	67 3%	94 5%	112 6%	139 7%	161 8%	86 4%	238 12%	284 15%	154 8%	0 0%	12 1%
Northern Ad Seg Male	465 100%	39 8%	49 11%	38 8%	119 26%	21 5%	35 8%	29 6%	33 7%	27 6%	10 2%	19 4%	34 7%	7 2%	0 0%	5 1%
Northern Total	2,421 100%	120 5%	200 8%	156 6%	378 16%	88 4%	129 5%	141 6%	172 7%	188 8%	96 4%	257 11%	318 13%	161 7%	0 0%	17 1%
Southern	1,693 100%	139 8%	280 17%	220 13%	478 28%	120 7%	126 7%	106 6%	83 5%	38 2%	11 1%	21 1%	18 1%	3 0%	0 0%	50 3%
South Woods	3,331 100%	168 5%	268 8%	168 5%	460 14%	134 4%	214 6%	243 7%	278 8%	286 9%	155 5%	338 10%	426 13%	163 5%	1 0%	29 1%
Subtotal Male Offenders in Other Facilities	12,819 100%	700 5%	1,147 9%	819 6%	1,930 15%	503 4%	666 5%	733 6%	767 6%	762 6%	413 3%	950 7%	2,089 16%	1,055 8%	86 1%	199 2%

Prison Complex Offenders By Total Term At Admission

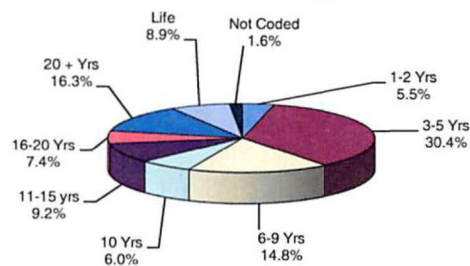
Institution	Total	1-2 Years	3 Years	4 Years	5 Years	6 Years	7 Years	8-9 Years	10 Years	11-14 Years	15 Years	16-20 Years	20+ Years	Life With Parole	Life Without Parole	Not Coded
ADTC	469	3	12	22	50	30	42	58	58	53	38	52	48	3	0	0
	100%	1%	3%	5%	11%	6%	9%	12%	12%	11%	8%	11%	10%	1%	0%	0%
SUBTOTAL	13,288	703	1,159	841	1,980	533	708	791	825	815	451	1,002	2,137	1,058	86	199
	100%	5%	9%	6%	15%	4%	5%	6%	6%	6%	3%	8%	16%	8%	1%	1%
Mahan - Female Prison	609	31	114	42	112	20	30	36	29	36	16	37	71	22	0	13
	100%	5%	19%	7%	18%	3%	5%	6%	5%	6%	3%	6%	12%	4%	0%	2%
Total Prison Complex	13,897	734	1,273	883	2,092	553	738	827	854	851	467	1,039	2,208	1,080	86	212
	100%	5%	9%	6%	15%	4%	5%	6%	6%	6%	3%	7%	16%	8%	1%	2%

ADTC



The median term at ADTC is 10 years.

MALE OFFENDERS IN OTHER FACILITIES

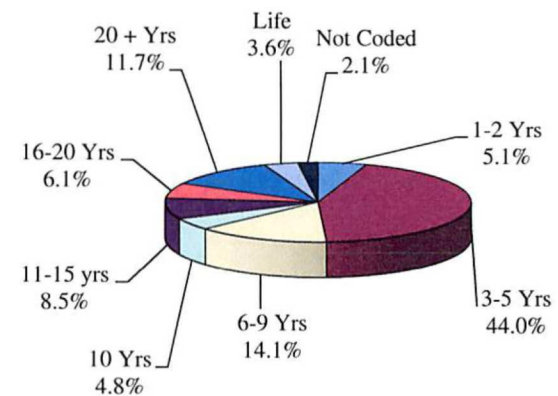


The median term for Male Offenders in Other Facilities is 7 years.

Thirty-two percent (32.6%) of all Male Offenders in Other Facilities are serving sentences of 16 years or more.

Eighty-one percent (81%) of all offenders at New Jersey State Prison are serving sentences of 16 years or more, with 485 Life With Parole and 82 Life Without Parole.

FEMALE OFFENDERS



The median term at Edna Mahan is 5 years.

Forty-nine percent (49.1%) of the female offenders at Edna Mahan Correctional Facility for Women are serving sentences of 5 years or less.

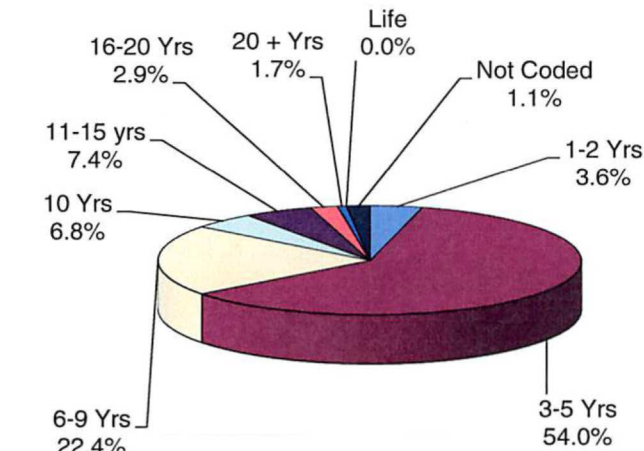
Youth Complex Offenders By Total Term At Admission

Institution	Total	1-2 Years	3 Years	4 Years	5 Years	6 Years	7 Years	8-9 Years	10 Years	11-14 Years	15 Years	16-20 Years	20+ Years	Life With Parole	Life Without Parole	Not Coded
Garden State	1,219 100%	29 2%	141 12%	101 8%	346 28%	72 6%	117 10%	98 8%	101 8%	87 7%	36 3%	52 4%	31 3%	0 0%	0 0%	8 1%
Mountainview	627 100%	36 6%	136 22%	88 14%	207 33%	34 5%	51 8%	32 5%	20 3%	7 1%	1 0%	0 0%	0 0%	0 0%	0 0%	15 2%
Wagner Main	298 100%	6 2%	37 12%	28 9%	79 27%	25 8%	20 7%	24 8%	29 10%	20 7%	10 3%	13 4%	6 2%	0 0%	0 0%	1 0%
Wagner Ad Seg	263 100%	17 6%	29 11%	29 11%	79 30%	13 5%	30 11%	25 10%	13 5%	12 5%	4 2%	4 2%	6 2%	0 0%	0 0%	2 1%
Wagner Minimum Units	71 100%	2 3%	12 17%	4 6%	22 31%	3 4%	6 8%	6 8%	6 8%	4 6%	3 4%	2 3%	0 0%	0 0%	0 0%	1 1%
Wagner Total	632 100%	25 4%	78 12%	61 10%	180 28%	41 6%	56 9%	55 9%	48 8%	36 6%	17 3%	19 3%	12 2%	0 0%	0 0%	4 1%
Total Youth Complex	2,478 100%	90 4%	355 14%	250 10%	733 30%	147 6%	224 9%	185 7%	169 7%	130 5%	54 2%	71 3%	43 2%	0 0%	0 0%	27 1%

Offenders In Halfway Houses, County Jails, Reentry, and St. Francis By Total Term At Admission

Institution	Total	1-2 Years	3 Years	4 Years	5 Years	6 Years	7 Years	8-9 Years	10 Years	11-14 Years	15 Years	16-20 Years	20+ Years	Life	Capital	Not Coded
Central Medical Unit	5	0	0	0	0	0	0	0	0	0	2	0	0	3	0	0
	100%	0%	0%	0%	0%	0%	0%	0%	0%	0%	40%	0%	0%	60%	0%	0%
County Jail	92	7	5	1	3	1	0	1	0	0	0	0	1	0	0	73
	100%	8%	5%	1%	3%	1%	0%	1%	0%	0%	0%	0%	1%	0%	0%	79%
Reentry	117	4	18	18	29	8	13	8	4	5	2	4	4	0	0	0
	100%	3%	15%	15%	25%	7%	11%	7%	3%	4%	2%	3%	3%	0%	0%	0%
Halfway House	2,623	58	355	324	844	200	177	200	172	124	51	63	48	0	0	7
	100%	2%	14%	12%	32%	8%	7%	8%	7%	5%	2%	2%	2%	0%	0%	0%
Total Halfway Houses, County Jails, Reentry, St. Francis	2,837	69	378	343	876	209	190	209	176	129	55	67	53	3	0	80
	100%	2%	13%	12%	31%	7%	7%	7%	6%	5%	2%	2%	2%	0%	0%	3%

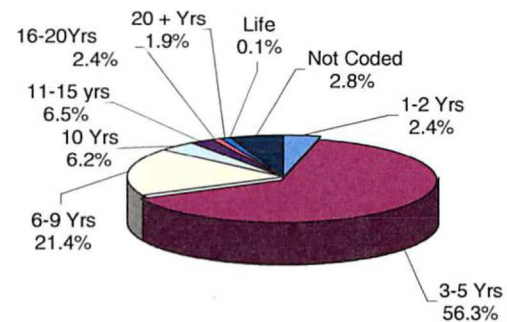
YOUTH COMPLEX



The median youth complex term is 5 years.

No youth complex offenders are currently serving life sentences.

HALFWAY HOUSES, COUNTY JAILS, REENTRY, ST. FRANCIS



The median term for offenders housed in Halfway Houses, County Jails, Reentry, and St. Francis is 5 years.

Fifty-eight percent (58.7%) of offenders housed in Halfway Houses, County Jails, Reentry, and St. Francis are serving terms of 5 years or less.

MANDATORY MINIMUM TERM

**OFFENDERS IN NEW JERSEY CORRECTIONAL INSTITUTIONS
ON JANUARY 2, 2019, BY MANDATORY MINIMUM TERM**

In New Jersey, since 1979, the courts have utilized mandatory minimum sentences. This means that an offender must serve the entire minimum sentence before being eligible for parole consideration. Mandatory minimum terms are not reduced by earned credits (commutation, minimum security, or work).

OFFENDERS IN CORRECTIONAL INSTITUTIONS BY MANDATORY MINIMUM TERM

Mandatory Minimum Term	Total		Male Offenders in Other Facilities		Youth Complex		ADTC		Edna Mahan		Halfway Houses, County Jails, Reentry, St. Francis	
	#	%	#	%	#	%	#	%	#	%	#	%
TOTAL OFFENDERS	14,660	100%	9,694	100%	1,967	100%	397	100%	393	100%	2,209	100%
<18 Months	729	5%	269	3%	188	10%	0	0%	15	4%	257	12%
18 Months	214	1%	120	1%	29	1%	1	0%	0	0%	64	3%
2 Years	444	3%	225	2%	33	2%	3	1%	11	3%	172	8%
3 Years	1,103	8%	572	6%	125	6%	10	3%	22	6%	374	17%
4 Years	2,119	14%	1,080	11%	455	23%	7	2%	25	6%	552	25%
5 Years	1,647	11%	942	10%	313	16%	32	8%	57	15%	303	14%
6-9 Years	2,865	20%	1,746	18%	564	29%	164	41%	91	23%	300	14%
10 Years	182	1%	127	1%	22	1%	9	2%	8	2%	16	1%
11-14 Years	1,320	9%	977	10%	144	7%	70	18%	44	11%	85	4%
15 Years	204	1%	156	2%	14	1%	24	6%	4	1%	6	0%
16-19 Years	996	7%	827	9%	47	2%	39	10%	36	9%	47	2%
20-24 Years	562	4%	483	5%	27	1%	17	4%	21	5%	14	1%
25-29 Years	382	3%	356	4%	4	0%	13	3%	4	1%	5	0%
30 Years	748	5%	706	7%	0	0%	4	1%	26	7%	12	1%
30+ Years	1,145	8%	1108	11%	2	0%	4	1%	29	7%	2	0%

- Seventy-six percent (76.3%) of all adult offenders have mandatory minimum terms (14,660 out of 19,212).
- The median mandatory minimum term is 5.9 years.
- Twenty-eight percent (28%) of those with mandatory minimum terms have mandatory minimum terms of 15 years or more.

Prison Complex Offenders By Mandatory Minimum Term

Institution	Total	< 18 Months	18 Months	2 Years	3 Years	4 Years	5 Years	6-9 Years	10 Years	11-14 Years	15 Years	16-19 Years	20-24 Years	25-29 Years	30 Years	30+ Years
Bayside Main	745 100%	22 3%	14 2%	23 3%	74 10%	144 19%	95 13%	176 24%	13 2%	84 11%	10 1%	42 6%	15 2%	9 1%	19 3%	5 1%
Bayside Farm	266 100%	22 8%	12 5%	13 5%	18 7%	42 16%	31 12%	52 20%	1 0%	39 15%	5 2%	22 8%	4 2%	1 0%	4 2%	0 0%
Bayside Total	1,011 100%	44 4%	26 3%	36 4%	92 9%	186 18%	126 12%	228 23%	14 1%	123 12%	15 1%	64 6%	19 2%	10 1%	23 2%	5 0%
CRAF Jones Farm	21 100%	3 14%	5 24%	9 43%	3 14%	0 0%	1 5%	0 0%	0 0%	0 0%	0 0%	0 0%	0 0%	0 0%	0 0%	0 0%
CRAF Reception	176 100%	26 15%	6 3%	11 6%	25 14%	44 25%	23 13%	24 14%	3 2%	6 3%	1 1%	4 2%	3 2%	0 0%	0 0%	0 0%
CRAF Total	197 100%	29 15%	11 6%	20 10%	28 14%	44 22%	24 12%	24 12%	3 2%	6 3%	1 1%	4 2%	3 2%	0 0%	0 0%	0 0%
East Jersey Main	1,141 100%	1 0%	0 0%	2 0%	7 1%	17 1%	13 1%	50 4%	9 1%	120 11%	36 3%	190 17%	156 14%	134 12%	256 22%	150 13%
East Jersey Camp	36 100%	0 0%	0 0%	1 3%	2 6%	4 11%	3 8%	14 39%	1 3%	8 22%	0 0%	2 6%	0 0%	0 0%	0 0%	1 3%
East Jersey Total	1,177 100%	1 0%	0 0%	3 0%	9 1%	21 2%	16 1%	64 5%	10 1%	128 11%	36 3%	192 16%	156 13%	134 11%	256 22%	151 13%

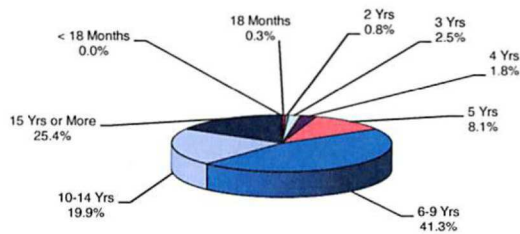
Prison Complex Offenders By Mandatory Minimum Term

Institution	Total	< 18 Months	18 Months	2 Years	3 Years	4 Years	5 Years	6-9 Years	10 Years	11-14 Years	15 Years	16-19 Years	20-24 Years	25-29 Years	30 Years	30+ Years
Midstate	486 100%	11 2%	9 2%	14 3%	49 10%	110 23%	81 17%	121 25%	8 2%	35 7%	3 1%	24 5%	10 2%	3 1%	4 1%	4 1%
NJ State Prison	1,350 100%	9 1%	4 0%	6 0%	25 2%	22 2%	33 2%	68 5%	9 1%	41 3%	11 1%	59 4%	32 2%	70 5%	152 11%	809 60%
Northern Main	1,558 100%	26 2%	15 1%	20 1%	80 5%	147 9%	141 9%	322 21%	26 2%	225 14%	28 2%	184 12%	97 6%	62 4%	126 8%	59 4%
Northern Ad Seg Male	327 100%	13 4%	11 3%	8 2%	29 9%	60 18%	47 14%	76 23%	3 1%	28 9%	1 0%	18 6%	11 3%	3 1%	9 3%	10 3%
Northern Total	1,885 100%	39 2%	26 1%	28 1%	109 6%	207 11%	188 10%	398 21%	29 2%	253 13%	29 2%	202 11%	108 6%	65 3%	135 7%	69 4%
Southern	999 100%	78 8%	21 2%	73 7%	152 15%	245 25%	183 18%	186 19%	4 0%	30 3%	2 0%	17 2%	2 0%	0 0%	6 1%	0 0%
South Woods	2,589 100%	58 2%	23 1%	45 2%	108 4%	245 9%	291 11%	657 25%	50 2%	361 14%	59 2%	265 10%	153 6%	74 3%	130 5%	70 3%
Subtotal Male Offenders in Other Facilities	9,694 100%	269 3%	120 1%	225 2%	572 6%	1,080 11%	942 10%	1,746 18%	127 1%	977 10%	156 2%	827 9%	483 5%	356 4%	706 7%	1,108 11%

Prison Complex Offenders By Mandatory Minimum Term

Institution	Total	< 18 Months	18 Months	2 Years	3 Years	4 Years	5 Years	6-9 Years	10 Years	11-14 Years	15 Years	16-19 Years	20-24 Years	25-29 Years	30 Years	30+ Years
ADTC	397 100%	0 0%	1 0%	3 1%	10 3%	7 2%	32 8%	164 41%	9 2%	70 18%	24 6%	39 10%	17 4%	13 3%	4 1%	4 1%
Subtotal	10,091 100%	269 3%	121 1%	228 2%	582 6%	1,087 11%	974 10%	1,910 19%	136 1%	1,047 10%	180 2%	866 9%	500 5%	369 4%	710 7%	1,112 11%
Mahan - Female Prison	393 100%	15 4%	0 0%	11 3%	22 6%	25 6%	57 15%	91 23%	8 2%	44 11%	4 1%	36 9%	21 5%	4 1%	26 7%	29 7%
Total Prison Complex	10,484 100%	284 3%	121 1%	239 2%	604 6%	1,112 11%	1,031 10%	2,001 19%	144 1%	1,091 10%	184 2%	902 9%	521 5%	373 4%	736 7%	1,141 11%

ADTC

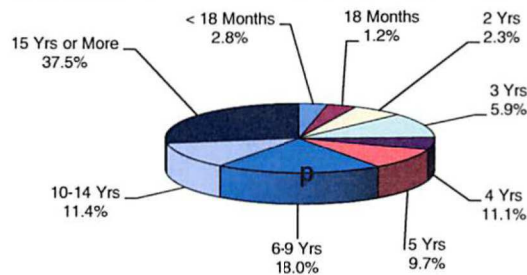


The median mandatory minimum term at ADTC is 8 years 6 months.

Eighty-four percent (84.6%) of the ADTC population have mandatory minimum sentences (397 of 469).

Forty-five percent (45.3%) have mandatory minimum terms of 10 years or longer.

MALE OFFENDERS IN OTHER FACILITIES

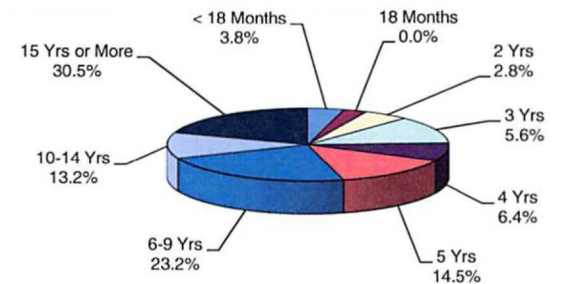


Of the 12,819 Male Offenders in Other Facilities, 75.6% (9,694) have mandatory minimum terms.

The median mandatory minimum term for Male Offenders in Other Facilities is 7.6 years (ADTC excluded).

Eighty-eight percent (88.7%) of New Jersey State Prison inmates have mandatory minimum terms and 83% percent of those have minimum terms of 15 years or more.

FEMALE OFFENDERS



The median mandatory minimum term at Edna Mahan is 6.7 years.

At Edna Mahan, 64.5% of the females housed have minimum terms (393 of 609).

Thirty-three percent (33.1%) of the females with mandatory minimum terms have terms of 5 years or less.

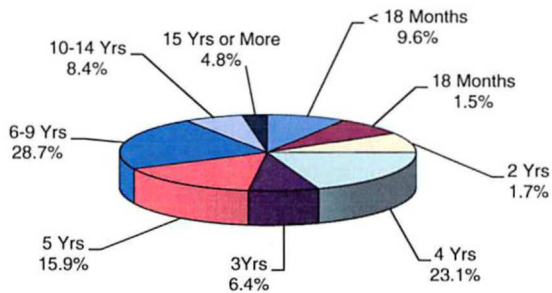
Youth Complex Offenders By Mandatory Minimum Term

Institution	Total	< 18 Months	18 Months	2 Years	3 Years	4 Years	5 Years	6-9 Years	10 Years	11-14 Years	15 Years	16-19 Years	20-24 Years	25-29 Years	30 Years	30+ Years
Garden State	1,017 100%	77 8%	15 1%	11 1%	52 5%	213 21%	152 15%	319 31%	15 1%	95 9%	8 1%	34 3%	21 2%	3 0%	0 0%	2 0%
Mountainview	447 100%	75 17%	8 2%	13 3%	46 10%	142 32%	76 17%	83 19%	1 0%	3 1%	0 0%	0 0%	0 0%	0 0%	0 0%	0 0%
Wagner Main	243 100%	19 8%	4 2%	2 1%	12 5%	46 19%	35 14%	80 33%	5 2%	24 10%	5 2%	9 4%	1 0%	1 0%	0 0%	0 0%
Wagner Ad Seg	210 100%	12 6%	2 1%	7 3%	11 5%	44 21%	45 21%	65 31%	1 0%	14 7%	0 0%	4 2%	5 2%	0 0%	0 0%	0 0%
Wagner Minimum Units	50 100%	5 10%	0 0%	0 0%	4 8%	10 20%	5 10%	17 34%	0 0%	8 16%	1 2%	0 0%	0 0%	0 0%	0 0%	0 0%
Wagner Total	503 100%	36 7%	6 1%	9 2%	27 5%	100 20%	85 17%	162 32%	6 1%	46 9%	6 1%	13 3%	6 1%	1 0%	0 0%	0 0%
Total Youth Complex	1,967 100%	188 10%	29 1%	33 2%	125 6%	455 23%	313 16%	564 29%	22 1%	144 7%	14 1%	47 2%	27 1%	4 0%	0 0%	2 0%

Offenders In Halfway Houses, County Jails, Reentry, and St. Francis By Mandatory Minimum Term

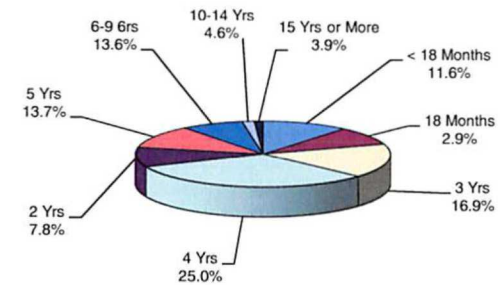
Institution	Total	< 18 Months	18 Months	2 Years	3 Years	4 Years	5 Years	6-9 Years	10 Years	11-14 Years	15 Years	16-19 Years	20-24 Years	25-29 Years	30 Years	30+ Years
Central Medical Unit	4	0	0	0	0	0	1	1	0	0	1	0	0	0	0	1
	100%	0%	0%	0%	0%	0%	25%	25%	0%	0%	25%	0%	0%	0%	0%	25%
County Jail	4	0	0	0	0	2	0	1	0	0	0	0	0	1	0	0
	100%	0%	0%	0%	0%	50%	0%	25%	0%	0%	0%	0%	0%	25%	0%	0%
Reentry	92	8	2	3	6	24	14	21	1	4	0	5	2	1	1	0
	100%	9%	2%	3%	7%	26%	15%	23%	1%	4%	0%	5%	2%	1%	1%	0%
Halfway House	2,109	249	62	169	368	526	288	277	15	81	5	42	12	3	11	1
	100%	12%	3%	8%	17%	25%	14%	13%	1%	4%	0%	2%	1%	0%	1%	0%
Total Halfway Houses, County Jails, Reentry, St. Francis	2,209	257	64	172	374	552	303	300	16	85	6	47	14	5	12	2
	100%	12%	3%	8%	17%	25%	14%	14%	1%	4%	0%	2%	1%	0%	1%	0%

YOUTH COMPLEX



The median mandatory minimum term for youth complex offenders is 4.2 years. Among youth complex offenders, 79.3% have mandatory minimum terms (1,967 of 2,478). Of these, 58.2% have mandatory minimum terms of 5 years or less.

HALFWAY HOUSES COUNTY JAILS, REENTRY, ST. FRANCIS



The median mandatory minimum term for inmates in Halfway Houses, County Jails, Reentry, and St. Francis is 3.5 years. Seventy-seven percent (77.8%) of the offenders in Halfway Houses, County Jails, Reentry, and St. Francis have mandatory minimum terms (2,209 of 2,837). Of these, 77.9% have mandatory minimum terms of 5 years or less.

AGE GROUP

**OFFENDERS IN NEW JERSEY CORRECTIONAL INSTITUTIONS
ON JANUARY 2, 2019, BY AGE**

The age of the offender is the chronological age as of January 2, 2019.

OFFENDERS IN CORRECTIONAL INSTITUTIONS BY AGE

Age	Total		Male Offenders in Other Facilities		Youth Complex		ADTC		Edna Mahan		Halfway Houses, County Jails, Reentry, St. Francis	
	#	%	#	%	#	%	#	%	#	%	#	%
TOTAL OFFENDERS	19,212	100%	12,819	100%	2,478	100%	469	100%	609	100%	2,837	100%
< 17 Years	0	0%	0	0%	0	0%	0	0%	0	0%	0	0%
17 Years	0	0%	0	0%	0	0%	0	0%	0	0%	0	0%
18-20 Years	333	2%	21	0%	265	11%	2	0%	9	1%	36	1%
21-22 Years	850	4%	85	1%	636	26%	14	3%	13	2%	102	4%
23-24 Years	1,193	6%	245	2%	701	28%	16	3%	36	6%	195	7%
25-27 Years	2,153	11%	976	8%	741	30%	28	6%	66	11%	342	12%
28-30 Years	2,149	11%	1,586	12%	120	5%	29	6%	84	14%	330	12%
31-33 Years	1,919	10%	1,544	12%	7	0%	31	7%	62	10%	275	10%
34-36 Years	1,748	9%	1,366	11%	2	0%	32	7%	68	11%	280	10%
37-39 Years	1,674	9%	1,316	10%	1	0%	40	9%	50	8%	267	9%
40-44 Years	2,084	11%	1,617	13%	1	0%	55	12%	67	11%	344	12%
45-49 Years	1,767	9%	1,397	11%	1	0%	54	12%	53	9%	262	9%
50-54 Years	1,361	7%	1,070	8%	1	0%	64	14%	45	7%	181	6%
55-59 Years	950	5%	784	6%	1	0%	40	9%	33	5%	92	3%
60-64 Years	500	3%	421	3%	1	0%	25	5%	13	2%	40	1%
65+ Years	459	2%	391	3%	0	0%	39	8%	10	2%	19	1%
Not Coded	72	0%	0	0%	0	0%	0	0%	0	0%	72	3%

- The median age for all inmates is 35 years.
- Two percent (2%) of all offenders are 20 years of age or younger.
- Thirty-two percent (32%) of all offenders are between the ages of 21-30.
- Twenty-eight percent (28%) of all offenders are 31 to 39 years of age.
- Thirty-seven percent (37%) of all offenders are 40 years of age and older.

Prison Complex Offenders By Age

Institution	Total	< 17 Years	17 Years	18-20 Years	21-22 Years	23-24 Years	25-27 Years	28-30 Years	31-33 Years	34-36 Years	37-39 Years	40-44 Years	45-49 Years	50-54 Years	55-59 Years	60-64 Years	65+ Years	Not Coded
Bayside Main	994 100%	0 0%	0 0%	0 0%	6 1%	10 1%	116 12%	169 17%	135 14%	124 12%	115 12%	112 11%	91 9%	62 6%	32 3%	17 2%	5 1%	0 0%
Bayside Farm	438 100%	0 0%	0 0%	0 0%	0 0%	1 0%	13 3%	57 13%	55 13%	50 11%	55 13%	62 14%	65 15%	42 10%	29 7%	7 2%	2 0%	0 0%
Bayside Total	1,432 100%	0 0%	0 0%	0 0%	6 0%	11 1%	129 9%	226 16%	190 13%	174 12%	170 12%	174 12%	156 11%	104 7%	61 4%	24 2%	7 0%	0 0%
CRAF Jones Farm	98 100%	0 0%	0 0%	0 0%	0 0%	0 0%	3 3%	12 12%	17 17%	14 14%	12 12%	12 12%	11 11%	9 9%	6 6%	1 1%	1 1%	0 0%
CRAF Reception	467 100%	0 0%	0 0%	4 1%	10 2%	28 6%	51 11%	60 13%	68 15%	53 11%	45 10%	50 11%	51 11%	25 5%	12 3%	9 2%	1 0%	0 0%
CRAF Total	565 100%	0 0%	0 0%	4 1%	10 2%	28 5%	54 10%	72 13%	85 15%	67 12%	57 10%	62 11%	62 11%	34 6%	18 3%	10 2%	2 0%	0 0%
East Jersey Main	1,179 100%	0 0%	0 0%	0 0%	0 0%	5 0%	26 2%	67 6%	102 9%	118 10%	109 9%	197 17%	181 15%	139 12%	122 10%	64 5%	49 4%	0 0%
East Jersey Camp	48 100%	0 0%	0 0%	0 0%	0 0%	0 0%	3 6%	4 8%	6 13%	3 6%	6 13%	9 19%	6 13%	4 8%	5 10%	1 2%	1 2%	0 0%
East Jersey Total	1,227 100%	0 0%	0 0%	0 0%	0 0%	5 0%	29 2%	71 6%	108 9%	121 10%	115 9%	206 17%	187 15%	143 12%	127 10%	65 5%	50 4%	0 0%

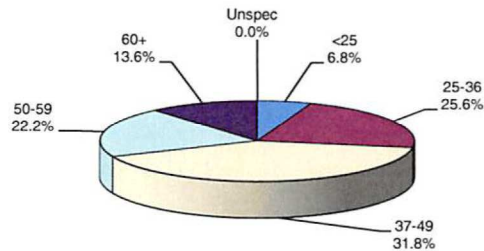
Prison Complex Offenders By Age

Institution	Total	< 17 Years	17 Years	18-20 Years	21-22 Years	23-24 Years	25-27 Years	28-30 Years	31-33 Years	34-36 Years	37-39 Years	40-44 Years	45-49 Years	50-54 Years	55-59 Years	60-64 Years	65+ Years	Not Coded
Midstate	629	0	0	2	10	43	75	72	74	68	66	67	61	45	32	9	5	0
	100%	0%	0%	0%	2%	7%	12%	11%	12%	11%	10%	11%	10%	7%	5%	1%	1%	0%
NJ State Prison	1,521	0	0	4	14	34	78	100	148	137	143	216	198	163	125	65	96	0
	100%	0%	0%	0%	1%	2%	5%	7%	10%	9%	9%	14%	13%	11%	8%	4%	6%	0%
Northern Main	1,956	0	0	3	10	24	145	252	231	231	184	231	223	161	124	79	58	0
	100%	0%	0%	0%	1%	1%	7%	13%	12%	12%	9%	12%	11%	8%	6%	4%	3%	0%
Northern Ad Seg Male	465	0	0	5	20	41	59	88	60	39	37	54	27	17	10	6	2	0
	100%	0%	0%	1%	4%	9%	13%	19%	13%	8%	8%	12%	6%	4%	2%	1%	0%	0%
Northern Total	2,421	0	0	8	30	65	204	340	291	270	221	285	250	178	134	85	60	0
	100%	0%	0%	0%	1%	3%	8%	14%	12%	11%	9%	12%	10%	7%	6%	4%	2%	0%
Southern	1,693	0	0	0	2	5	131	272	258	177	231	235	151	119	68	30	14	0
	100%	0%	0%	0%	0%	0%	8%	16%	15%	10%	14%	14%	9%	7%	4%	2%	1%	0%
South Woods	3,331	0	0	3	13	54	276	433	390	352	313	372	332	284	219	133	157	0
	100%	0%	0%	0%	0%	2%	8%	13%	12%	11%	9%	11%	10%	9%	7%	4%	5%	0%
Subtotal Male Offenders in Other Facilities	12,819	0	0	21	85	245	976	1,586	1,544	1,366	1,316	1,617	1,397	1,070	784	421	391	0
	100%	0%	0%	0%	1%	2%	8%	12%	12%	11%	10%	13%	11%	8%	6%	3%	3%	0%

Prison Complex Offenders By Age

Institution	Total	< 17 Years	17 Years	18-20 Years	21-22 Years	23-24 Years	25-27 Years	28-30 Years	31-33 Years	34-36 Years	37-39 Years	40-44 Years	45-49 Years	50-54 Years	55-59 Years	60-64 Years	65+ Years	Not Coded
ADTC	469	0	0	2	14	16	28	29	31	32	40	55	54	64	40	25	39	0
	100%	0%	0%	0%	3%	3%	6%	6%	7%	7%	9%	12%	12%	14%	9%	5%	8%	0%
Subtotal	13,288	0	0	23	99	261	1,004	1,615	1,575	1,398	1,356	1,672	1,451	1,134	824	446	430	0
	100%	0%	0%	0%	1%	2%	8%	12%	12%	11%	10%	13%	11%	9%	6%	3%	3%	0%
Mahan - Female Prison	609	0	0	9	13	36	66	84	62	68	50	67	53	45	33	13	10	0
	100%	0%	0%	1%	2%	6%	11%	14%	10%	11%	8%	11%	9%	7%	5%	2%	2%	0%
Total Prison Complex	13,897	0	0	32	112	297	1,070	1,699	1,637	1,466	1,406	1,739	1,504	1,179	857	459	440	0
	100%	0%	0%	0%	1%	2%	8%	12%	12%	11%	10%	13%	11%	8%	6%	3%	3%	0%

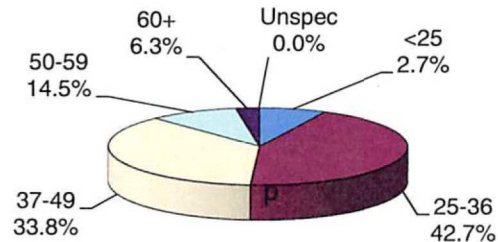
ADTC



The median age at ADTC is 44 years.

Thirty-five percent (35.8%) of the ADTC offenders are 50 years of age or older. This may be compared with 20.8% of Male Offenders in Other Facilities and 16.6% of female (Edna Mahan) offenders.

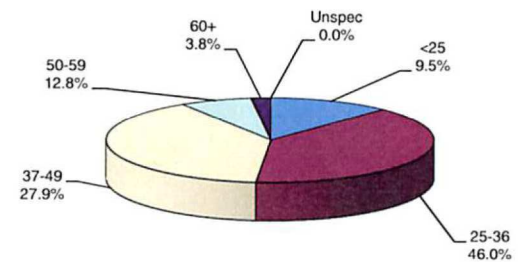
MALE OFFENDERS IN OTHER FACILITIES



The median age for Male Offenders in Other Facilities is 38 years.

Forty-two percent (42.7%) of Male Offenders in Other Facilities are age 25 to 36 (ADTC excluded).

FEMALE OFFENDERS



The median age for female inmates (Edna Mahan) is 35 years.

Forty-six percent (46.0%) of the women at Edna Mahan are age 25 to 36.

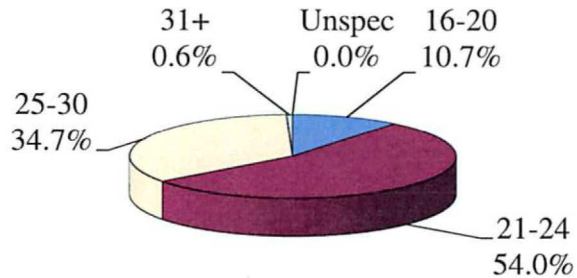
Youth Complex Offenders By Age

Institution	Total	< 17 Years	17 Years	18-20 Years	21-22 Years	23-24 Years	25-27 Years	28-30 Years	31-33 Years	34-36 Years	37-39 Years	40-44 Years	45-49 Years	50-54 Years	55-59 Years	60-64 Years	65+ Years	Not Coded
Garden State	1,219 100%	0 0%	0 0%	133 11%	305 25%	352 29%	362 30%	57 5%	2 0%	2 0%	1 0%	1 0%	1 0%	1 0%	1 0%	1 0%	0 0%	0 0%
Mountainview	627 100%	0 0%	0 0%	83 13%	175 28%	154 25%	188 30%	26 4%	1 0%	0 0%	0 0%	0 0%	0 0%	0 0%	0 0%	0 0%	0 0%	0 0%
Wagner Main	298 100%	0 0%	0 0%	15 5%	75 25%	117 39%	80 27%	8 3%	3 1%	0 0%	0 0%	0 0%	0 0%	0 0%	0 0%	0 0%	0 0%	0 0%
Wagner Ad Seg	263 100%	0 0%	0 0%	34 13%	67 25%	64 24%	83 32%	15 6%	0 0%	0 0%	0 0%	0 0%	0 0%	0 0%	0 0%	0 0%	0 0%	0 0%
Wagner Minimum Units	71 100%	0 0%	0 0%	0 0%	14 20%	14 20%	28 39%	14 20%	1 1%	0 0%	0 0%	0 0%	0 0%	0 0%	0 0%	0 0%	0 0%	0 0%
Wagner Total	632 100%	0 0%	0 0%	49 8%	156 25%	195 31%	191 30%	37 6%	4 1%	0 0%	0 0%	0 0%	0 0%	0 0%	0 0%	0 0%	0 0%	0 0%
Total Youth Complex	2,478 100%	0 0%	0 0%	265 11%	636 26%	701 28%	741 30%	120 5%	7 0%	2 0%	1 0%	1 0%	1 0%	1 0%	1 0%	1 0%	0 0%	0 0%

Offenders In Halfway Houses, County Jails, Reentry, and St. Francis By Age

Institution	Total	< 17 Years	17 Years	18-20 Years	21-22 Years	23-24 Years	25-27 Years	28-30 Years	31-33 Years	34-36 Years	37-39 Years	40-44 Years	45-49 Years	50-54 Years	55-59 Years	60-64 Years	65+ Years	Not Coded
Central Medical Unit	5	0	0	0	0	0	0	0	0	0	1	0	2	0	0	0	2	0
	100%	0%	0%	0%	0%	0%	0%	0%	0%	0%	20%	0%	40%	0%	0%	0%	40%	0%
County Jail	92	0	0	0	1	3	2	4	4	1	2	2	0	0	0	1	0	72
	100%	0%	0%	0%	1%	3%	2%	4%	4%	1%	2%	2%	0%	0%	0%	1%	0%	78%
Reentry	117	0	0	0	8	20	18	24	9	7	8	8	7	4	3	1	0	0
	100%	0%	0%	0%	7%	17%	15%	21%	8%	6%	7%	7%	6%	3%	3%	1%	0%	0%
Halfway House	2,623	0	0	36	93	172	322	302	262	272	256	334	253	177	89	38	17	0
	100%	0%	0%	1%	4%	7%	12%	12%	10%	10%	10%	13%	10%	7%	3%	1%	1%	0%
Total Halfway Houses, County Jails, Reentry, St. Francis	2,837	0	0	36	102	195	342	330	275	280	267	344	262	181	92	40	19	72
	100%	0%	0%	1%	4%	7%	12%	12%	10%	10%	9%	12%	9%	6%	3%	1%	1%	3%

YOUTH COMPLEX

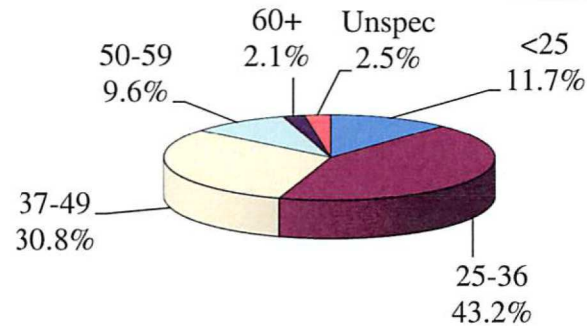


The median age for the youth complex is 24 years.

Eighty-eight percent (88.7%) of all youth complex inmates are between the ages of 21 and 30.

Sixty-four percent (64.7%) are less than 25 years of age.

HALFWAY HOUSES, COUNTY JAILS, ST. FRANCIS



The median age for offenders in Halfway Houses, County Jails, Reentry, and St. Francis is 35 years.

The median age for offenders housed in county jails is 30.5 years; while offenders in halfway houses have a median age of 35 years.

RACE/ETHNIC IDENTIFICATION

**OFFENDERS IN NEW JERSEY CORRECTIONAL INSTITUTIONS
ON JANUARY 2, 2019, BY RACE/ETHNIC IDENTIFICATION**

In these tabulations, a Hispanic is a person of Mexican, Puerto Rican, Cuban, South American or other Spanish culture or origin (Spain or Portugal) regardless of complexion.

OFFENDERS IN CORRECTIONAL INSTITUTIONS BY RACE/ETHNIC IDENTIFICATION

Ethnic Identification	Total		Male Offenders in Other Facilities		Youth Complex		ADTC		Edna Mahan		Halfway Houses, County Jails, Reentry, St. Francis	
	#	%	#	%	#	%	#	%	#	%	#	%
TOTAL OFFENDERS	19,212	100%	12,819	100%	2,478	100%	469	100%	609	100%	2,837	100%
Black	11,847	62%	7,754	60%	1,701	69%	109	23%	278	46%	2,005	71%
White	4,125	21%	2,784	22%	426	17%	239	51%	269	44%	407	14%
Hispanic	3,031	16%	2,190	17%	338	14%	113	24%	52	9%	338	12%
Asian	124	1%	81	1%	12	0%	8	2%	9	1%	14	0%
American Indian	13	0%	10	0%	1	0%	0	0%	1	0%	1	0%
Other or Not Coded	72	0%	0	0%	0	0%	0	0%	0	0%	72	3%

- Sixty-two (62%) percent of all state correctional institution offenders were Black, 21% were White, 16% were Hispanic, and 1% were Asian.

Prison Complex Offenders By Race/Ethnic Identification

Institution	Total	Black	White	Hispanic	Asian	American Indian	Other or Not Coded
Bayside Main	994 100%	614 62%	209 21%	166 17%	5 1%	0 0%	0 0%
Bayside Farm	438 100%	295 67%	93 21%	48 11%	2 0%	0 0%	0 0%
Bayside Total	1,432 100%	909 63%	302 21%	214 15%	7 0%	0 0%	0 0%
CRAF Jones Farm	98 100%	28 29%	59 60%	9 9%	2 2%	0 0%	0 0%
CRAF Reception	467 100%	274 59%	120 26%	70 15%	3 1%	0 0%	0 0%
CRAF Total	565 100%	302 53%	179 32%	79 14%	5 1%	0 0%	0 0%
East Jersey Main	1,179 100%	739 63%	202 17%	231 20%	7 1%	0 0%	0 0%
East Jersey Camp	48 100%	26 54%	11 23%	11 23%	0 0%	0 0%	0 0%
East Jersey Total	1,227 100%	765 62%	213 17%	242 20%	7 1%	0 0%	0 0%

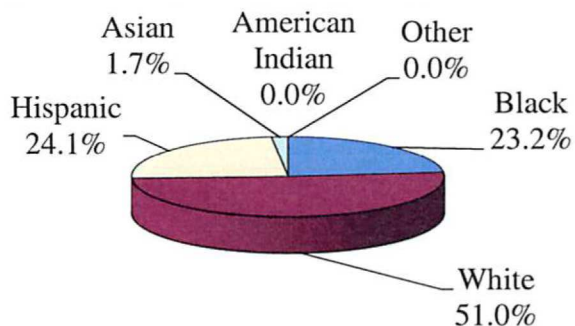
Prison Complex Offenders By Race/Ethnic Identification

Institution	Total	Black	White	Hispanic	Asian	American Indian	Other or Not Coded
Midstate	629 100%	402 64%	145 23%	75 12%	5 1%	2 0%	0 0%
NJ State Prison	1,521 100%	939 62%	326 21%	231 15%	24 2%	1 0%	0 0%
Northern Main	1,956 100%	1,292 66%	305 16%	354 18%	4 0%	1 0%	0 0%
Northern Ad Seg Male	465 100%	298 64%	101 22%	65 14%	1 0%	0 0%	0 0%
Northern Total	2,421 100%	1,590 66%	406 17%	419 17%	5 0%	1 0%	0 0%
Southern	1,693 100%	956 56%	402 24%	322 19%	12 1%	1 0%	0 0%
South Woods	3,331 100%	1,891 57%	811 24%	608 18%	16 0%	5 0%	0 0%
Subtotal Male Offenders in Other Facilities	12,819 100%	7,754 60%	2,784 22%	2,190 17%	81 1%	10 0%	0 0%

Prison Complex Offenders By Race/Ethnic Identification

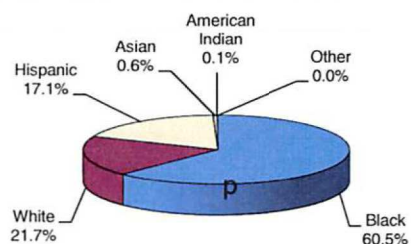
Institution	Total	Black	White	Hispanic	Asian	American Indian	Other or Not Coded
ADTC	469	109	239	113	8	0	0
	100%	23%	51%	24%	2%	0%	0%
Subtotal	13,288	7,863	3,023	2,303	89	10	0
	100%	59%	23%	17%	1%	0%	0%
Mahan - Female Prison	609	278	269	52	9	1	0
	100%	46%	44%	9%	1%	0%	0%
Total Prison Complex	13,897	8,141	3,292	2,355	98	11	0
	100%	59%	24%	17%	1%	0%	0%

ADTC



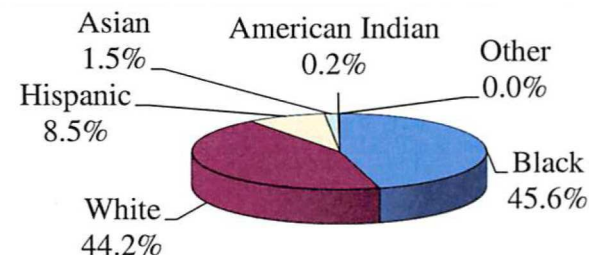
White offenders comprised 51.0% of the offenders at ADTC.

MALE OFFENDERS IN OTHER FACILITIES



The largest proportion of Black male offenders in a major facility was at Northern (66%).
 The largest proportion of White male offenders at a major facility was at CRAF (32%), ADTC excluded.
 The largest proportion of Hispanic male offenders at a major facility was at East Jersey (20%), (ADTC excluded).

FEMALE OFFENDERS



Black offenders comprised 45.6% of the population at Edna Mahan. This may be compared with Black offenders comprising 60.5% of the Male Offenders in Other Facilities.

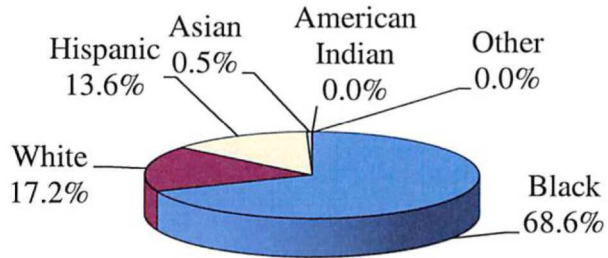
Youth Complex Offenders By Race/Ethnic Identification

Institution	Total	Black	White	Hispanic	Asian	American Indian	Other or Not Coded
Garden State	1,219 100%	845 69%	183 15%	183 15%	8 1%	0 0%	0 0%
Mountainview	627 100%	399 64%	147 23%	78 12%	3 0%	0 0%	0 0%
Wagner Main	298 100%	224 75%	36 12%	37 12%	0 0%	1 0%	0 0%
Wagner Ad Seg	263 100%	183 70%	48 18%	32 12%	0 0%	0 0%	0 0%
Wagner Minimum Units	71 100%	50 70%	12 17%	8 11%	1 1%	0 0%	0 0%
Wagner Total	632 100%	457 72%	96 15%	77 12%	1 0%	1 0%	0 0%
Total Youth Complex	2,478 100%	1,701 69%	426 17%	338 14%	12 0%	1 0%	0 0%

Offenders In Halfway Houses, County Jails, Reentry, and St. Francis By Race/Ethnic Identification

Institution	Total	Black	White	Hispanic	Asian	American Indian	Other or Not Coded
Central Medical Unit	5	3	1	1	0	0	0
	100%	60%	20%	20%	0%	0%	0%
County Jail	92	10	2	8	0	0	72
	100%	11%	2%	9%	0%	0%	78%
Reentry	117	102	7	8	0	0	0
	100%	87%	6%	7%	0%	0%	0%
Halfway House	2,623	1,890	397	321	14	1	0
	100%	72%	15%	12%	1%	0%	0%
Total Halfway Houses, County Jails, Reentry, St. Francis	2,837	2,005	407	338	14	1	72
	100%	71%	14%	12%	0%	0%	3%

YOUTH COMPLEX

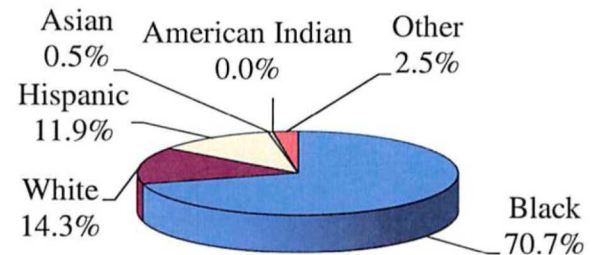


The largest proportion of Black offenders in the youth complex facilities was housed at Wagner (72%).

The largest proportion of White offenders in the youth complex facilities was housed at Mountainview (23%).

The largest proportion of Hispanic offenders in the youth complex facilities was housed at Garden State (15%).

HALFWAY HOUSES, COUNTY JAILS, REENTRY, ST. FRANCIS



Race and ethnicity for inmates assigned to Halfway Houses, County Jails, Reentry, and St. Francis was roughly equivalent to that for the total adult inmate population.

COUNTY OF COMMITMENT

**OFFENDERS IN NEW JERSEY CORRECTIONAL INSTITUTIONS
ON JANUARY 2, 2019, BY COUNTY OF COMMITMENT**

OFFENDERS IN NEW JERSEY CORRECTIONAL INSTITUTIONS BY COUNTY OF COMMITMENT

County of Commitment	Total		Male Offenders in Other Facilities		Youth Complex		ADTC		Edna Mahan		Halfway Houses, County Jails, Reentry, St. Francis	
	#	%	#	%	#	%	#	%	#	%	#	%
TOTAL OFFENDERS	19,212	100%	12,819	100%	2,478	100%	469	100%	609	100%	2,837	100%
Atlantic	1,169	6%	797	6%	144	6%	16	3%	43	7%	169	6%
Bergen	788	4%	550	4%	78	3%	50	11%	19	3%	91	3%
Burlington	686	4%	458	4%	86	3%	23	5%	35	6%	84	3%
Camden	2,263	12%	1,534	12%	283	11%	44	9%	78	13%	324	11%
Cape May	403	2%	268	2%	40	2%	10	2%	26	4%	59	2%
Cumberland	608	3%	408	3%	83	3%	20	4%	13	2%	84	3%
Essex	2,919	15%	1,885	15%	473	19%	34	7%	64	11%	463	16%
Gloucester	442	2%	312	2%	51	2%	16	3%	11	2%	52	2%
Hudson	1,277	7%	861	7%	191	8%	16	3%	35	6%	174	6%
Hunterdon	70	0%	50	0%	6	0%	5	1%	4	1%	5	0%
Mercer	1,121	6%	719	6%	171	7%	8	2%	35	6%	188	7%
Middlesex	1,492	8%	1003	8%	182	7%	52	11%	64	11%	191	7%
Monmouth	978	5%	669	5%	99	4%	26	6%	44	7%	140	5%
Morris	304	2%	210	2%	27	1%	15	3%	11	2%	41	1%
Ocean	703	4%	490	4%	62	3%	35	7%	21	3%	95	3%
Passaic	1,490	8%	976	8%	192	8%	37	8%	36	6%	249	9%
Salem	202	1%	117	1%	27	1%	10	2%	8	1%	40	1%
Somerset	315	2%	215	2%	34	1%	5	1%	20	3%	41	1%
Sussex	156	1%	106	1%	15	1%	8	2%	10	2%	17	1%
Union	1,494	8%	991	8%	221	9%	19	4%	26	4%	237	8%
Warren	119	1%	67	1%	12	0%	19	4%	3	0%	18	1%
Not Coded	213	1%	133	1%	1	0%	1	0%	3	0%	75	3%

- Essex County has the highest percentage of commitments among Male Offenders in Other Facilities (15%), and the Youth Complex (19%).
- Camden County has the highest percentage of commitments at Edna Mahan (13%).
- Bergen, and Middlesex have the highest percentage of commitments at ADTC (11%).
- Essex County has the highest percentage of commitments (16%) at Halfway Houses, County Jails, Reentry, and Saint Francis Hospital.
- Two counties, Essex and Camden, combine to comprise over one fourth (27%) of total NJDOC commitments.

Prison Complex Offenders By County Of Commitment

Institution	Total	Atl	Ber	Burl	Cam	Cape May	Cum	Ess	Glou	Hud	Hunt	Mer	Mid	Mon	Mor	Oc	Pas	Sal	Som	Sus	Un	War	Not Coded
Bayside Main	994 100%	65 7%	30 3%	38 4%	146 15%	28 3%	49 5%	127 13%	30 3%	70 7%	1 0%	69 7%	83 8%	46 5%	10 1%	45 5%	59 6%	10 1%	13 1%	13 1%	55 6%	3 0%	4 0%
Bayside Farm	438 100%	25 6%	11 3%	16 4%	76 17%	12 3%	5 1%	57 13%	15 3%	22 5%	2 0%	21 5%	32 7%	27 6%	5 1%	23 5%	40 9%	5 1%	10 2%	0 0%	33 8%	1 0%	0 0%
Bayside Total	1,432 100%	90 6%	41 3%	54 4%	222 16%	40 3%	54 4%	184 13%	45 3%	92 6%	3 0%	90 6%	115 8%	73 5%	15 1%	68 5%	99 7%	15 1%	23 2%	13 1%	88 6%	4 0%	4 0%
CRAF Jones Farm	98 100%	2 2%	5 5%	2 2%	13 13%	1 1%	4 4%	8 8%	5 5%	4 4%	2 2%	0 0%	16 16%	6 6%	3 3%	8 8%	6 6%	1 1%	2 2%	2 2%	6 6%	1 1%	1 1%
CRAF Reception	467 100%	27 6%	15 3%	28 6%	52 11%	13 3%	17 4%	61 13%	18 4%	33 7%	5 1%	39 8%	24 5%	25 5%	7 1%	9 2%	39 8%	6 1%	9 2%	5 1%	33 7%	1 0%	1 0%
CRAF Total	565 100%	29 5%	20 4%	30 5%	65 12%	14 2%	21 4%	69 12%	23 4%	37 7%	7 1%	39 7%	40 7%	31 5%	10 2%	17 3%	45 8%	7 1%	11 2%	7 1%	39 7%	2 0%	2 0%
East Jersey Main	1,179 100%	64 5%	55 5%	32 3%	90 8%	10 1%	22 2%	234 20%	10 1%	105 9%	2 0%	56 5%	98 8%	66 6%	18 2%	37 3%	96 8%	9 1%	21 2%	9 1%	128 11%	6 1%	11 1%
East Jersey Camp	48 100%	2 4%	3 6%	1 2%	3 6%	1 2%	0 0%	13 27%	0 0%	1 2%	1 2%	1 2%	5 10%	2 4%	2 4%	2 4%	5 10%	0 0%	1 2%	0 0%	5 10%	0 0%	0 0%
East Jersey Total	1,227 100%	66 5%	58 5%	33 3%	93 8%	11 1%	22 2%	247 20%	10 1%	106 9%	3 0%	57 5%	103 8%	68 6%	20 2%	39 3%	101 8%	9 1%	22 2%	9 1%	133 11%	6 0%	11 1%

Prison Complex Offenders By County Of Commitment

Institution	Total	Atl	Ber	Burl	Cam	Cape May	Cum	Ess	Glou	Hud	Hunt	Mer	Mid	Mon	Mor	Oc	Pas	Sal	Som	Sus	Un	War	Not Coded
Midstate	629	37	17	27	54	13	16	85	16	46	1	42	87	40	13	28	46	2	8	7	40	3	1
	100%	6%	3%	4%	9%	2%	3%	14%	3%	7%	0%	7%	14%	6%	2%	4%	7%	0%	1%	1%	6%	0%	0%
NJ State Prison	1,521	100	78	71	139	18	54	235	22	95	7	92	105	84	27	52	88	12	17	11	129	6	79
	100%	7%	5%	5%	9%	1%	4%	15%	1%	6%	0%	6%	7%	6%	2%	3%	6%	1%	1%	1%	8%	0%	5%
Northern Main	1,956	62	101	27	118	15	32	476	12	179	3	75	158	112	37	54	210	8	46	17	200	5	9
	100%	3%	5%	1%	6%	1%	2%	24%	1%	9%	0%	4%	8%	6%	2%	3%	11%	0%	2%	1%	10%	0%	0%
Northern Ad Seg Male	465	42	15	14	54	16	7	77	10	27	2	33	38	16	6	17	37	7	5	2	32	4	4
	100%	9%	3%	3%	12%	3%	2%	17%	2%	6%	0%	7%	8%	3%	1%	4%	8%	2%	1%	0%	7%	1%	1%
Northern Total	2,421	104	116	41	172	31	39	553	22	206	5	108	196	128	43	71	247	15	51	19	232	9	13
	100%	4%	5%	2%	7%	1%	2%	23%	1%	9%	0%	4%	8%	5%	2%	3%	10%	1%	2%	1%	10%	0%	1%
Southern	1,693	119	63	56	263	64	59	155	60	85	11	93	138	83	32	88	137	17	29	11	116	11	3
	100%	7%	4%	3%	16%	4%	3%	9%	4%	5%	1%	5%	8%	5%	2%	5%	8%	1%	2%	1%	7%	1%	0%
South Woods	3,331	252	157	146	526	77	143	357	114	194	13	198	219	162	50	127	213	40	54	29	214	26	20
	100%	8%	5%	4%	16%	2%	4%	11%	3%	6%	0%	6%	7%	5%	2%	4%	6%	1%	2%	1%	6%	1%	1%
Subtotal Male Offenders in Other Facilities	12,819	797	550	458	1,534	268	408	1,885	312	861	50	719	1,003	669	210	490	976	117	215	106	991	67	133
	100%	6%	4%	4%	12%	2%	3%	15%	2%	7%	0%	6%	8%	5%	2%	4%	8%	1%	2%	1%	8%	1%	1%

Prison Complex Offenders By County Of Commitment

Institution	Total	Atl	Ber	Burl	Cam	Cape May	Cum	Ess	Glou	Hud	Hunt	Mer	Mid	Mon	Mor	Oc	Pas	Sal	Som	Sus	Un	War	Not Coded
ADTC	469 100%	16 3%	50 11%	23 5%	44 9%	10 2%	20 4%	34 7%	16 3%	16 3%	5 1%	8 2%	52 11%	26 6%	15 3%	35 7%	37 8%	10 2%	5 1%	8 2%	19 4%	19 4%	1 0%
Subtotal	13,288 100%	813 6%	600 5%	481 4%	1,578 12%	278 2%	428 3%	1,919 14%	328 2%	877 7%	55 0%	727 5%	1,055 8%	695 5%	225 2%	525 4%	1,013 8%	127 1%	220 2%	114 1%	1,010 8%	86 1%	134 1%
Mahan - Female Prison	609 100%	43 7%	19 3%	35 6%	78 13%	26 4%	13 2%	64 11%	11 2%	35 6%	4 1%	35 6%	64 11%	44 7%	11 2%	21 3%	36 6%	8 1%	20 3%	10 2%	26 4%	3 0%	3 0%
Total Prison Complex	13,897 100%	856 6%	619 4%	516 4%	1,656 12%	304 2%	441 3%	1,983 14%	339 2%	912 7%	59 0%	762 5%	1119 8%	739 5%	236 2%	546 4%	1,049 8%	135 1%	240 2%	124 1%	1,036 7%	89 1%	137 1%

Youth Complex Offenders By County Of Commitment

Institution	Total	Atl	Ber	Burl	Cam	Cape May	Cum	Ess	Glou	Hud	Hunt	Mer	Mid	Mon	Mor	Oc	Pas	Sal	Som	Sus	Un	War	Not Coded
Garden State	1,219 100%	66 5%	35 3%	58 5%	152 12%	14 1%	54 4%	221 18%	19 2%	89 7%	1 0%	92 8%	90 7%	52 4%	16 1%	32 3%	89 7%	11 1%	21 2%	6 0%	94 8%	6 0%	1 0%
Mountainview	627 100%	39 6%	27 4%	9 1%	54 9%	15 2%	8 1%	124 20%	17 3%	62 10%	2 0%	32 5%	51 8%	24 4%	5 1%	16 3%	63 10%	5 1%	7 1%	5 1%	59 9%	3 0%	0 0%
Wagner Main	298 100%	19 6%	9 3%	8 3%	29 10%	5 2%	4 1%	62 21%	4 1%	19 6%	1 0%	28 9%	15 5%	14 5%	3 1%	6 2%	24 8%	6 2%	5 2%	0 0%	34 11%	3 1%	0 0%
Wagner Ad Seg	263 100%	18 7%	3 1%	9 3%	36 14%	5 2%	15 6%	54 21%	10 4%	21 8%	1 0%	14 5%	18 7%	7 3%	3 1%	4 2%	10 4%	5 2%	1 0%	4 2%	25 10%	0 0%	0 0%
Wagner Minimum Units	71 100%	2 3%	4 6%	2 3%	12 17%	1 1%	2 3%	12 17%	1 1%	0 0%	1 1%	5 7%	8 11%	2 3%	0 0%	4 6%	6 8%	0 0%	0 0%	0 0%	9 13%	0 0%	0 0%
Wagner Total	632 100%	39 6%	16 3%	19 3%	77 12%	11 2%	21 3%	128 20%	15 2%	40 6%	3 0%	47 7%	41 6%	23 4%	6 1%	14 2%	40 6%	11 2%	6 1%	4 1%	68 11%	3 0%	0 0%
Total Youth Complex	2,478 100%	144 6%	55 2%	32 1%	90 4%	10 0%	22 1%	234 9%	10 0%	105 4%	2 0%	56 2%	98 4%	66 3%	18 1%	37 1%	96 4%	9 0%	21 1%	9 0%	128 5%	6 0%	11 0%

Offenders In Halfway Houses, County Jails, Reentry, and St. Francis By County Of Commitment

Institution	Total	Atl	Ber	Burl	Cam	Cape May	Cum	Ess	Glou	Hud	Hunt	Mer	Mid	Mon	Mor	Oc	Pas	Sal	Som	Sus	Un	War	Not Coded
Central Medical Unit	5 100%	0 0%	1 20%	0 0%	1 20%	0 0%	0 0%	2 40%	0 0%	0 0%	0 0%	0 0%	1 20%	0 0%	0 0%	0 0%	0 0%	0 0%	0 0%	0 0%	0 0%	0 0%	0 0%
County Jail	92 100%	2 2%	1 1%	1 1%	2 2%	0 0%	1 1%	3 3%	0 0%	0 0%	0 0%	1 1%	2 2%	1 1%	0 0%	0 0%	1 1%	0 0%	1 1%	0 0%	1 1%	0 0%	75 82%
Reentry	117 100%	1 1%	1 1%	0 0%	4 3%	0 0%	0 0%	64 55%	0 0%	12 10%	2 2%	1 1%	7 6%	1 1%	0 0%	1 1%	6 5%	1 1%	2 2%	1 1%	13 11%	0 0%	0 0%
Halfway House	2,623 100%	166 6%	88 3%	83 3%	317 12%	59 2%	83 3%	394 15%	52 2%	162 6%	3 0%	186 7%	181 7%	138 5%	41 2%	94 4%	242 9%	39 1%	38 1%	16 1%	223 9%	18 1%	0 0%
Total Halfway Houses, County Jails, Reentry, St. Francis	2,837 100%	169 6%	91 3%	84 3%	324 11%	59 2%	84 3%	463 16%	52 2%	174 6%	5 0%	188 7%	191 7%	140 5%	41 1%	95 3%	249 9%	40 1%	41 1%	17 1%	237 8%	18 1%	75 3%